



Effectiveness of Criminal Research Unit and Intelligence Cooperative Relationships Nabire Police Unit Security in Disclosure of Criminal Offenses

Fitriyah Ingratubun

Faculty of Law, Doctor Husni Ingratubun Papua University, Indonesia

<http://dx.doi.org/10.18415/ijmmu.v11i1.5388>

Abstract

Satreskrim at the level of the Resort Police (Polres) of a Regency/City is tasked with carrying out the functions of inquiry, investigation and supervision of criminal investigations, including identification functions and field forensic laboratories as well as coaching, coordinating and supervising PPNS. Meanwhile, the Intelligence and Security Unit is tasked with carrying out and developing intelligence functions in the security sector, services related to public gathering permits and the issuance of SKCK, receiving notifications of community activities or political activities, as well as making recommendations on applications for permits to hold firearms and the use of explosives. The aim of this research is to determine the effectiveness of the cooperative relationship between the Criminal Investigation Unit and the Security Intelligence Unit in disclosing criminal acts at the Nabire Police. In this research, the types of research used are Normative Juridical research and Empirical Juridical research. All data collected by the author is then clarified and analyzed to produce conclusions from the material obtained in accordance with the problems discussed. Law enforcement cannot be carried out haphazardly by the Criminal Investigation Unit or the Intelligence and Security Unit at the Nabire Police. These two units are the spearheads of law enforcement in the community in Nabire Regency which is the jurisdiction of the Nabire Police, therefore in carrying out their duties they must uphold good cohesion and discipline in receiving reports, investigating, investigating and processing criminal acts to court. , especially criminal acts that involve and harm society and the state. It is necessary to provide guidance to members of the Criminal Investigation Unit and the Intelligence and Security Unit of the Nabire Police carried out by the Head of Police, Head of each Unit regarding monitoring, supervision, control and good coordination between units, so that the cooperative relationship between the two units can be effective in the context of dealing with and uncovering Crime in Nabire Regency.

Keywords: *Police; Disclosure; Crime*

Introduction

Punishment without a legal foundation is an arbitrary act. For example, if a thief is found red-handed or is caught red-handed by society and prosecuted in such a way, he is paraded to the police headquarters and instantly placed in detention without first being recognized.¹ Furthermore, it was

¹ Ismu Gunadi dan Jonaedi Efendi, *Hukum Pidana*, Kencana, Jakarta, 2014, hlm 35.

ignored for a few weeks before being remembered and let go. Of course, a process like this violates the human rights of the people the thief.

Likewise with the method of disclosing a criminal act, so that from public reports, or criminal acts caught red-handed, or the result of surrendering oneself after committing a criminal act, must be investigated legally, starting from the level of investigation, investigation, up to the level of investigation. During trials in court, everyone must use the legal instruments in force in our country, so that there are no haphazard arrests or simply restraint, which in the end could potentially lead to pre-trial.²

National Police of the Republic of Indonesia or abbreviated The National Police is an institution or institution that has main duties maintaining security and public order, enforcing law, and provide protection, protection and service to society. The National Police investigates and investigates illegal conduct as part of its law enforcement responsibilities. In the context of investigations and investigations, responsibility The Criminal Investigation Agency for Level of the Republic of Indonesia Police Headquarters in the Capital City State, the Directorate of Criminal Investigation for Regional Police Level (Polda) in the Provincial Region, and the Criminal Investigation Unit (Sat Criminal Investigation) for Resort Police Level (Polres) in Regency/City Areas carry out this criminal act.

The Detective function is used to carry out his tasks. Criminals collaborate with several other departments, such as the Intelligence and Security function, the Sabhara function, and the Traffic function, based on their mutual interests in discovering specific crimes. However, there is a function that, according to the author, has a significant role and may assist with criminal investigative chores, namely the Intelligence and Security function (Intelkam). As a result, Criminal Investigation has an excellent working relationship with Intelkam for investigations into certain situations requiring the attention of the National Police, such as Crime Corruption, Drugs, Illegal Logging, Murder, or Crime Money Laundering, and other Special Crimes.

Satreskrim are tasked with carrying out investigative functions, investigation, and supervision of criminal investigations, including field identification and forensic laboratory functions, as well as coaching, coordination, and supervision of PPNS at the Resort Police (Polres) level. Meanwhile, the Intelligence and Security Unit is in charge of organizing and developing intelligence functions in the security sector and related services with the general public's permission and the issuance of SKCK, as well as accepting notification of community or political activities and making recommendations on applications for firearms holder permits and explosives use.

Working relationships between units illegal Investigation and Intelligence Units have frequently happened in the exposure of illegal activities, according to the author's findings in Nabire Regency, particularly in Nabire Resort Police (Polres). This occurs because, aside from a lack of Criminal Investigation Unit personnel, the geographical conditions of the Nabire district are still relatively vulnerable to the anatomical identity of the population, which on average has the same face or has a close similarity perfect, as well as the similarity of the natives' names, so in uncovering crimes must be careful to avoid wrongly arresting or detaining the wrong person. Because if an arrest or detention goes wrong, there is a chance of not just receiving a pre-trial complaint from the culprit, but also huge protests at the police station. When this occurs, the community's security and order in Nabire Regency may be disrupted, necessitating a rather extended period of recovery.

Given the risks of the assignment in the investigation, and the fact that this is a relatively dangerous investigation, the author feels compelled to pursue legal studies with the thesis title "EFFECTIVE COOPERATIVE RELATIONSHIP BETWEEN RESEARCH UNITS CRIMINAL AND INTERNAL SECURITY INTELLIGENCE FORCES DISCLAIMER OF CRIMINAL ACTIONS AT NABIRE POLICE."

² Adami Chazawi, *Pelajaran Hukum Pidana 1*, PT. Raja Grafindo, Jakarta, 2007, hlm 17.

Research Methods

The types of research employed in this study include normative judicial research and empirical judicial research. Study Normative juridical research is research that originates from a data library or secondary data, particularly regulatory provisions legislation that is synchronized with the title and problem formulation, namely Law Number 8 of 1981 Concerning the Criminal Procedure Code; Constitution Number 17 of 2011 Concerning Intelligence; Law Number 2 of 2002 Concerning the Indonesian National Police; as well as text books, journals, and theses related to the problem being researched, which are all available online.

Meanwhile, empirical juridical research is research that is conducted by obtaining or discovering directly facts that occur in the practice of cooperation, particularly in criminal investigation units and security intelligence units, through observations and interviews with sources or respondents who are directly related to the topic under study.

All data gathered by the author was then clarified and evaluated in order to draw conclusions from the information. The acquired results are consistent with the difficulties highlighted. Conclusions or messages from the numerous items presented Analysis is utilized to investigate and discuss the author's research concerns in this study. Its goal is to generate conversations and conclusions that are relevant and suitable to the topic.

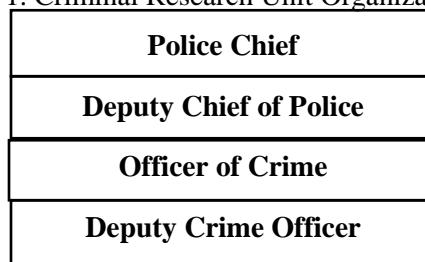
Discussion and Results

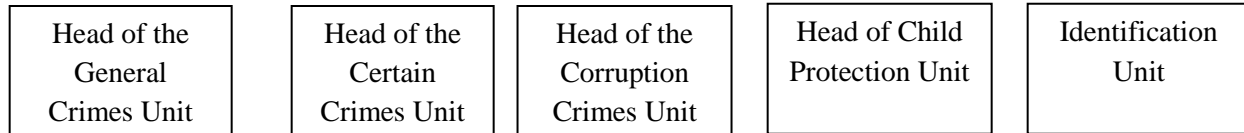
1) Effectiveness of Collaborative Relations Between Criminal Investigation Units and the Security Intelligence Unit in Disclosure of Actions

The Republic of Indonesia Police (Polri), as law enforcement officials, is responsible for ensuring security and order in its jurisdiction of different types of criminal actions. The field of Criminal Investigation, for example, in The National Police Headquarters has the regional structure of the Investigation Directorate Crime at the Regional Police (Polda) level, and the Investigation Unit Crime at the Resort Police (Polres) level, as well as The Intelligence and Security sector has a central structure command down to the regional level. Units under it, of course, cannot be separated from uninterrupted monitoring, supervision, control, and coordination of performance from the National Police Headquarters down to the lowest level, which is delegated under the command of the Regional Police Chief and Police Chief each region, so that work efforts can be created and realized between fields or units, in this case the Investigation Unit Crime (Sat Reskrim) and Security Intelligence Unit (Sat Intel).

The organizational structure of the Criminal Investigation Unit (Sat Reskrim) Nabire Police Station is shown in the following chart:

Chart 1. Criminal Research Unit Organizational Structure





Source: Nabire Police Criminal Investigation Unit

The Nabire Police Criminal Investigation Unit is divided into 5 (five) Units, and Each Unit is led by a Head of Unit, whose main duties are the division is as follows:

a. Head of the General Crimes Unit

It is a work unit under the function of the Criminal Investigation Unit has the duty and authority to carry out pre-prosecution, examination, addition, prosecution, enforcement against judges and court decisions, supervision of the implementation of decisions conditional release and other legal actions in criminal cases General Crimes.

b. Head of the Certain Crimes Unit

It is a work unit under the function of the Criminal Investigation Unit tasked with handling reports of criminal incidents from public. Apart from handling reports of criminal acts in general, the Tipiter Unit specializes in handling crimes special crimes related to certain criminal acts. Apart from that, certain criminal acts are also related to that concerns state assets and losses, for example in cases mining, illegal logging, and other protected forest areas.

c. Head of the Corruption Crimes Unit

The Corruption Crime Unit is a work unit below The function of the Criminal Investigation Unit is tasked with eradicating corruption by The aim of holding justice is to uphold the law and Justice.

d. Head of Child Protection Unit

PPA Unit Criminal Investigation Unit (Protection of Women and Children) Sat Criminal Investigation is led by the Unit Head, abbreviated as Kanit responsible to the Head of Criminal Investigation Unit, in carrying out his duties His duties are assisted by a number of Unit Non-Commissioned Officers (Banit) and one person General Administration Non-Commissioned Officer (Banum). The PPA Unit carries out its duties inquiry and investigation into certain criminal acts concerns women and children and provides protection towards women and children, including victims, witnesses and suspects, besides special duties, also handle cases other.

e. Identification Unit

The Criminal Investigation Unit Identification Unit is led by Paur responsible to the Head of Criminal Investigation Unit, in carrying out his duties His duties are assisted by a number of NCO Units (Banit). Units Identification of carrying out technical development tasks for the Dactyloscopic function Crime, organizing and carrying out fingerprint taking crime, organizing and carrying out searches and development of latent fingerprints of the SJC Comparative Examination Deed and organize data collection on Police signals.

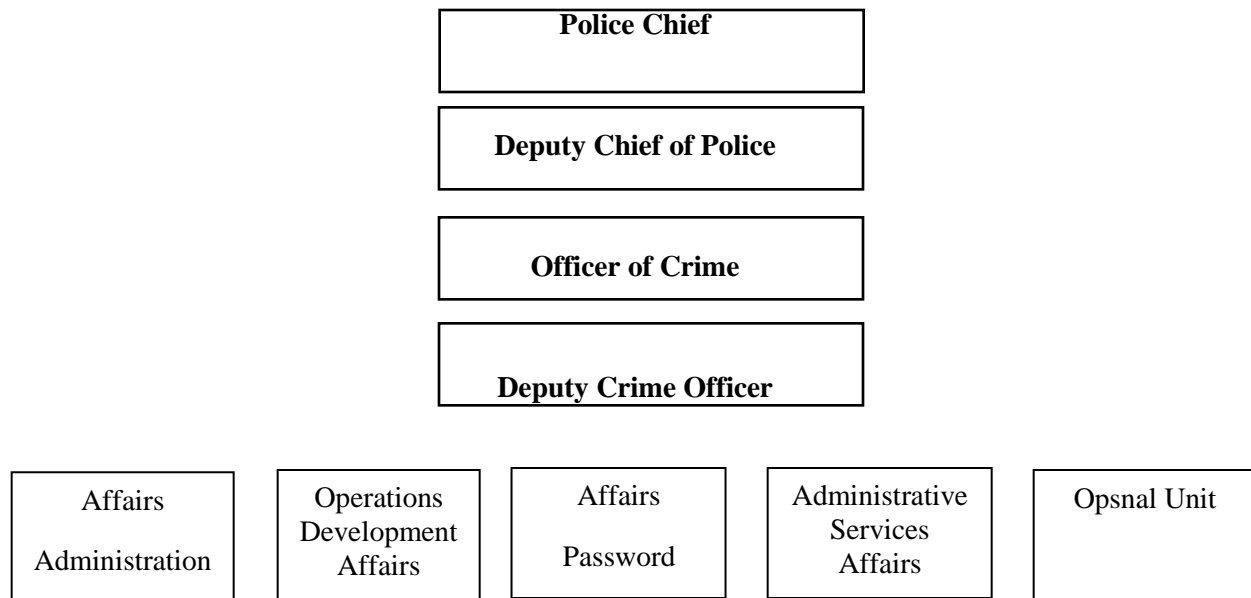
From the Duties and Functions described above, then implementation of the duties and functions of the Nabire Police Criminal Investigation Unit Head in Administrative matters are as follows:

- 1) Correspondence from the Criminal Investigation Department uses a one-stop system with the following arrangements:
 - a. Official correspondence for both general administration and criminal administration as well as the administration of evidence and detainees is carried out in accordance with the existing provisions of the National Police's Jukminkrim with careful connection in each implementation;

- b. Outgoing official correspondence from the Seluma Regency Police follows the applicable Police Jukmin provisions;
- c. Outgoing official correspondence from the Criminal Investigation Unit within the Police, signed by the Kasat or on behalf of the Kasat, signed by the Deputy Chief of Staff, prepared by Head of Bin Ops, Head of Unit and initialed by the person concerned as drafter;
- d. Letters prepared by the Head of Unit / Kaur Bin Ops to be signed by Kasat.

The same as the Criminal Investigation Unit, the organizational structure Nabire Police Intelligence and Security Unit (Sat Intelkam), shown in the chart as follows:

Chart 2. Organizational Structure of The Intelkam Unit



Source: Nabire Police Criminal Investigation Unit

- 1) Operations Development Affairs abbreviated as Urbin Ops
- 2) Password Affairs is tasked with carrying out coding activities
- 3) Yanmin Affairs is tasked with carrying out Administrative Services
- 4) Opsnal Unit, which consists of:
 - a) Socioeconomic Sector Unit
 - b) Socio-Cultural Sector Unit
 - c) Security Sector Unit
 - d) Political Sector Unit Wasendak (Weapons and Explosives Control)
 - e) POA (Control of Foreigner).

Looking at the completeness of the Criminal Investigation Unit's organizational structure and the Nabire Police Intelligence and Security Unit, showed that the performance there is no doubt about them every day, especially when it comes to the second This unit works together to help each other lighten each other's workload.

The realization of collaborative efforts between the Criminal Investigation Unit and Sat Intelkam here is mainly in order to uncover criminal acts and various other types of crimes that cannot be committed alone, considering that their movements are limited to their main tasks as investigators and

investigators, as well as the Intelligence and Security Unit on duty basically just as the eyes and ears of the command headquarters police, and other tasks that require cooperation with the Criminal Investigation Unit, for effective service to security and public order.

The performance of the Criminal Investigation Unit and the Nabire Police Intelligence and Security Unit in their respective fields of work, as well as in managing work that is good, can be created and realized effectively if these two elite units can work together in monitoring, measurable and directed supervision, control, and coordination from the head of each unit, whose main goal is to uncover various types of criminal acts within the jurisdiction of the Polic.³

Monitoring, supervision, control and coordination efforts which has implications for the effectiveness of cooperative relations between Sat Criminal Investigation Unit and Intelligence Unit are as follows:

1) Monitoring

Monitoring or monitoring is awareness about what you want to know in order to make measurements through time that shows movement towards the goal or precisely away from the goal.⁴³ Monitoring is generally done for the goal specific, to examine processes and objects or to evaluate condition or progress toward goals resulting from management of securities actions of several types, including actions for maintain ongoing management

Monitoring or monitoring the performance of the Criminal Investigation Unit at the Resort Police level (Polres) it is carried out by one person Head of Criminal Investigation Unit, who is appointed and works on a daily basis carrying out duties responsible to the Chief of Police. In carry out their duties, other than structural duties, as a Kasat Criminal Investigation and its members carry out investigative functions as mandated by Law Number 8 of the Year 1981 Concerning the Criminal Procedure Code (KUHAP), where Article 6 paragraph (1) letter a explains that the Investigator is a State Police Officer of the Republic of Indonesia.

Next on Article 7 paragraph (1) explains that the Investigator as intended in Article 6 Paragraph (1) letter a because of the obligation to have authority:

- a) Receiving a report or complaint from someone regarding the existence of criminal act;
- b) Take the first action at the scene;
- c) Order a suspect to stop and check for signs suspect's personal identification;
- d) Carry out arrests, detentions, searches, etc foreclosure;
- e) Carrying out inspections and confiscation of letters
- f) Taking fingerprints and photographing a person;
- g) Summon people to be heard and examined as suspects or witness;
- h) Bring in the experts needed in the relationship with case examination; Holding an end to the investigation;
- i) Carry out other actions according to the law that are responsible answer

Furthermore, paragraph (3) explains that in carrying out duties as intended in paragraph (1) and paragraph (2), investigator obliged to uphold applicable laws.

The Nabire Police Criminal Investigation Unit has the authority and the same obligations as described above. In carrying out the tasks above, the Nabire Police Criminal Investigation Unit adopted mandate from the Criminal Procedure Code and implemented into tasks the main thing is.

³ Bunga M Maroa, M.D. Arief, Djangih, H. (2019). Urgensi Peran Serta Masyarakat Dalam Upaya Pencegahan Dan Pemberantasan Tindak Pidana Korupsi. *Law Reform*, 15 (1), 85-97

The results of the author's research revealed that the Investigation Unit The Nabire Police Criminal Investigation Unit is led by the Head of the Investigation Unit Criminal, abbreviated as Kasat Reskrim, is responsible to the Nabire Police Chief, who in carrying out his daily duties, his work is monitored and under the control of the Deputy Chief of Police.

The main duties of the Head of Criminal Investigation Unit at Nabire Police as stated by AKP. Bertu Haridyka Eka Anwar, STK, SIK is as follows:

- 1) Provide technical guidance for investigation administration and investigations, as well as identification and forensic laboratories field;
- 2) Provide special services and protection to teenagers, children and women both as perpetrators and victims in accordance with the provisions of laws and regulations;
- 3) Identification for investigation and service purposes general.
- 4) Analyzing cases and their handling, as well reviewing the effectiveness of the implementation of Criminal Investigation's duties;
- 5) Implementation of supervision of investigations into criminal acts committed by investigators at the Police Criminal Investigation Unit and the Police Criminal Investigation Unit;
- 6) Guidance, coordination and supervision of PPNS both in the field operational of the Law;
- 7) Investigation and investigation of general and special criminal acts, including Economic Crimes, Corruption Crimes and Certain Crimes in the Jurisdiction of the Nabire Police as Unitary Parent;

Furthermore, the main duties of the Deputy Chief of Criminal Investigation are carry out development of the Criminal Investigation function for both personnel and materials as well as coordinating staff and administration activities within the Sat Criminal Investigation includes:

- 1) Submit appropriate considerations and suggestions to the Head of Criminal Investigation Unit with the field of work;
- 2) Coordinate and control staff work/activities and administration within the Criminal Investigation Unit staff;
- 3) Represent the Head of Criminal Investigation Unit if he is unable to carry out the work task;
- 4) Carry out special tasks assigned by the Head of Criminal Investigation Unit;
- 5) Maintain and supervise the implementation of work procedures, regarding work procedures that are in the nature of development in the environment Criminal Investigation Unit;
- 6) Report and be responsible for the implementation of tasks obligations to the Head of Criminal Investigation Unit

Look at the composition and structure of the Criminal Investigation Unit equipped with the technical and administrative implementation units above, According to the author, it should be sufficient to investigate, investigate and process criminal crimes at the Police Nabire, considering that the Nabire Police's jurisdiction is not very broad and it only requires coordination and cooperation between parallel units and assisted by the sub-sector police However, from the author's observations of the performance of Sat Criminal Investigation, in the context of arresting, detaining, search and confiscation as stated in Article 7 paragraph (1) letter d KUHAP above, sometimes investigators cannot do it themselves.⁴

In certain cases, for example criminal cases Corruption, usually the perpetrators and witnesses immediately run away or avoid being summoned and questioned by Unit investigators Criminal Investigation, so there is a need for cooperation with the Unit another, namely the Intelligence and Security Unit.

Based on data from research that the author obtained from Unit Nabire Police Criminal Investigation, there are several criminal acts of corruption in Nabire Regency, which is the Resort Police

⁴ Ismail, C. (2012). *Tantangan Polri dalam Pemeliharaan Kamtibmas Pada Masyarakat Demokrasi*. Jurnal Srigunting, Jakarta.

Legal Area Nabire, whose treatment took years because the perpetrator or witness avoids police questioning, as follows seen in Table 1 below:

Table 1. Data on Handling of Corruption Crime Cases in Nabire Resort Police for 2017 – 2023 Old Time Revealed

NO	POLICE REPORT	CASE	REPORTED/ SUSPECT	INFORMATION
1.	LP Number: LP/05-A/IV/2017/ Papua/Res Nabire, April 15th 2017	Alleged Corruption Abuse Village APBK Waroki Year 2015 and 2016	FERDINAN SAMORI (Waroki Village Head)	Long Process 4 years
2.	LP Number: LP/06-A/V/2017/ Papua/Res Nabire/ May 22 2017	Alleged Corruption Abuse Village APBK Nifation Year 2015 and 2016	MATIAS GOBAI (Nifasi Vilage Head)	Long Process 4 years
3.	LP Number: LP 14-A/XI/2018/ Criminal Investigation, Date 05 November 2018	Alleged Corruption Abuse APBK Manunggal Jaya, Makimi District, Regency Nabire, FY 2015, 2016, and 2017	DARIUS SUSATYA (Treasurer Village)	Long Process 5 years
4.	LP Number: LP/A/12/SPKT.Reskri m/2021/Papua/Res Nabire/Date 04 June 2021	Alleged Corruption Abuse Village APBK Yuar Year 2018 and Year 2019	SIMON RONGGIARI (Yuar Vilage Head)	Long Process 2 years

Source: Nabire Police Criminal Investigation Unit

Based on the table above, the average resolution of criminal acts Corruption is processed for 3 to 5 years, due to difficulties reveal the material truth due to the perpetrators and witnesses in that case avoiding being called by the police and even being there who ran away. This should not need to happen if monitoring of the performance of the Criminal Investigation Unit is carried out to the maximum, starting from the police leadership, Head of Criminal Investigation Unit, and Task Executing Units such as the General Crimes Unit, Corruption Unit, and the Tipiter Unit, so that the position of the reporter, reported party and witnesses can be determined immediately secured.

His is confirmed by information from the Head of the Investigation Unit Nabire Police Criminal AKP. Bertu Harydika Eka Anwar, STK., SIK:⁵

"There has been no monitoring from the Deputy Chief of Police or from ourselves maximum impact on the performance of the Criminal Investigation Unit, resulting in many actions crimes whose handling process escapes our monitoring, so it takes a long time to handle it, especially criminal acts Corruption takes the longest time, because after hearing a report police, the perpetrator immediately fled, including the witnesses. They avoid it and don't want to be called on checked,

⁵ Interview with Head of Criminal Investigation Unit at Nabire Police, AKP. Bertu Harydika Eka Anwar, STK., SIK, on August 28 2023, 13.00 WIT

so we have difficulty uncovering the truth material from public reports. For Corruption Crimes which was reported by the public with Police Report Number: LP Number: LP/05-A/IV/2017/Papua/Res Nabire, April 15 2017, and reported in the name of Ferdinan Samori, Village Head Waroki, processing time is up to 4 years, for police report Number: LP Number: LP/06-A/V/2017/Papua/Res Nabire/Date 22 May 2017, and the Reported Party was Matias Gobay, Head Nifasi Village, handling time 4 years, for police report Number: LP Number: LP 14-A/XI/2018/Reskrim, 05 November 2018, and reported in the name of Darius Susatya, Makimi Village treasurer, handling time 5 years, and Police Report Number: LP Number: LP/A/12/SPKT.Reskrim/2021/Papua/Res Nabire/Date 04 June 2021, and reported in the name of Simon Ronggiari, Village Head Yuar, handling time is 2 years. Everything took a long time because the witnesses left their respective villages and were difficult to find. After being gone for a long time, it's back, so that's the process handling was stopped and only reopened after witnesses "Forcibly summoned to the Nabire Police for questioning."

There's no denying that to get back the presence of perpetrators or witnesses who avoid summons These investigators really need coordination, cooperation and information from members of the Nabire Police Intelligence and Security Unit. This coordination is very important, considering duties and responsibilities Intekam units are more secretive and mobile everywhere without the perpetrators and witnesses of the case will be found out, so it will be easier obtain them and provide information to investigators to arrest or secure them. But coordination and This cooperation was acknowledged by the Head of Criminal Investigation Unit as not being optimal:

"For the effectiveness of cooperation between units, still needs a lot of improvement, especially regarding the coordination function, special attention is needed between Criminal Investigation Unit and Intelligence Security Unit."

The same as the Criminal Investigation Unit, then Unit Nabire Police Security Intelligence is also led by a Chief The unit, abbreviated as Kasat Intelkam, is responsible to the Nabire Police Chief, who carries out his daily duties under the control of the Deputy Chief of Police.

The main duties of the Head of Intelligence and Security at the Nabire Police are as follows:

- a) Leading the Security Intelligence Unit as Eyes and Ears The National Police unit is obliged to carry out early detection and provide warnings of problems and problem developments and changes in social life in society;
- b) Identify threats, disruptions, or obstacles to Public Security;
- c) Carry out observations of certain targets in the community in Bidang Ipoeksosbudhankam for interests that endanger society, especially in counterintelligence activities;
- d) Creating certain favorable conditions in community for the implementation of Polri's duties;
- e) Leading investigations, security and fundraising the need to carry out the duties and functions of the police, especially law enforcement, development of security and social order, as well as task requirements defense assistance and social strength;
- f) Organizing / developing Intelligence functions in the Security sector, including coding, and service providers in the form of letters Permits/Information relating to Foreigners, Firearms & Explosives, social / political activities of the community and letters Information from Police Records (SKCK) to members of the public who require and carry out supervision / security and its implementation

Public reports of a crime are sometimes carried out after considering the various risks involved the report, so this provides sufficient space and time wide enough for the perpetrator and witnesses to escape avoid being chased by officers, so that after the report is received, Officers had difficulty summoning perpetrators and witnesses necessary to clarify legal issues.

This was stated by Haji Hafid Tokoh The people in Nabire stated:⁶

"We people often experience a crime, but to report it to the police is sometimes there long family meetings, so that the perpetrator or parties The witness had run away before being reported. This often happens because people are still afraid of the perpetrators".

Problems like this are, of course, a strain on the Criminal Investigation Unit in terms of catching offenders. This is according to what the general public or victims report. Crimes cannot be investigated promptly and sent to the Prosecutor's Office or a court for prosecution in line with existing legislation. However, individuals are frequently fearful of taking vengeance on the perpetrator of the crime, therefore don't allow the culprit do it because it has been reported to police.

2) Supervision

The benefits of supervision in controlling the performance of an institution very important, especially for institutions that are closely related to society service. This is due to the service activities experienced directly by the community so that it can be used as an assessment positive or negative. In the context of monitoring the performance of the Criminal Investigation Unit and Sat Intelligence and Security, apart from direct superiors, namely the Police Chief and Kasat Each of these two units also has a supervisory officer each. This Supervisory Officer or Pawas is on duty monitor the performance of each unit.

Usually this Pawas take part in Case Title activities from the Criminal Investigation Unit, if the case being handled must receive special attention to determine who is the perpetrator or suspect and who is designated as a witness. According to the author's observations, case titles at the Criminal Investigation Unit are rare made on time, because it collides with the activities of each member. As a result the time required to establish status of suspects and witnesses from the results of the investigation report (BAP) made by investigators was delayed, and as a result provide opportunity and opportunity to potential suspects or potential witnesses to avoid or run away. So as in terms of cooperation that has been stipulated in the framework uncover certain criminal acts.

According to the author's observations, case titles at the Criminal Investigation Unit are rare made on time, because it collides with the activities of each member. As a result the time required to establish status of suspects and witnesses from the results of the investigation report (BAP) made by investigators was delayed, and as a result provide opportunity and opportunity to potential suspects or potential witnesses to avoid or run away. So as in terms of cooperation that has been stipulated in the framework uncover certain criminal acts.

This author's observation is reinforced by a statement from Kasat Nabire Police Criminal Investigation Unit as follows:⁷

"Our weaknesses include supervision, because our direct superior or Supervisory Officer rarely decides the right schedule for holding a case, because how busy each member is. This matter causing witnesses who have been examined and want to determine who the suspect is in the title of the case, have the opportunity to dodge or escape inside quite a long time. When the court event arrives, that's enough making it difficult for our unit to find them back to advanced process. As a result, you have to wait quite a long time looking for, even having to collaborate with Intelkam to found them."

In a separate place, the issue of supervision was also highlighted by Head of Intelligence and Security Unit at Nabire Police:

⁶ Interview with Haji Hafid, Nabire Community Figure, September 5 2023, 10.00 WIT.

⁷ Interview with Head of Criminal Investigation Unit at Nabire Police, AKP. Bertu Harydika Eka Anwar, STK., SIK, on August 28 2023, 13.00 WIT

"If you ask about the supervisory function of superiors regarding our performance, frankly it is not optimal, so it works the same between our unit and other units such as Sat Criminal Investigation in uncovering certain cases is not working as expected."

According to the author's observations, the reluctance of the respective Unit Heads to supervise the performance of members is due to the fact that the National Police has become a civil institution, no longer military like before, so it is the same as with civil servants, the nature of orders is accompanied by inherent supervision will relax the morale of members. This makes superiors sometimes not commanding but just directing or ordered to do a task, which if not carried out, no accompanied by disciplinary sanctions, it's still just a reprimand, which is what makes it happen inter-unit performance in uncovering criminal acts is not maximum and not immediately resolved.

3) Control

According to Harold Koontz, control is the measurement and correction of the performance of subordinates in order to attain then are accomplished (Control is the measurement and correction of performance subordinates, so that plans have been made to achieve goals can be achieved).⁸

This control aims to measure and quickly improve implementation of subordinate work, so that plans have been made to achieve the goals can be implemented well and correctly in accordance with previously carried out plans.

Related to the element of cooperation between the Criminal Investigation Unit and Sat Nabire Police Intelligence and Security, according to the author's observations quite good, because after all the freedom of each member units in carrying out their duties must still be under control by their respective superiors in the context of carrying out their duties and profession within one police institution. Because if members cannot be controlled and controlled, of course each can run independently and pose risks to destruction of the body of institutions.

However, this control is not without problems, considering the heart and the minds of members are not unanimous in practice. From the results According to the author's research, there are still members who cannot be regulated instantaneously, when there is an order to carry out certain tasks urgent and immediate. The Head of Criminal Investigation Unit who was contacted said:⁹

"Our members are not uncontrollable. All members In general, it can be controlled, because this is a National Police unit controlled by the state through the National Police Headquarters in Jakarta down to the lowest level in the regions. But always there are members, and they are individuals, who are less able differentiate between state duties and personal matters with family. So sometimes when there is an order, they said ready. But after that facing for giving the excuse that he wasn't actually ready, because there was a child is sick or a wife is about to give birth, even though the National Police doesn't recognize this in the performance of their duties. Must be ready to be born for the sake of security and public order."

According to the author, this cannot be repaired easily, because the psychology of each member cannot detected when dealing with personal or family matters, which linked to the assignment order from the relevant superior, as long as it is not a group, it may still be able to be overcome.

4) Coordination

Coordination is an effort to unite the activities of work units (units) of the organization, so that the organization move as a unified whole to carry out the whole organizational tasks to achieve its goals.

⁸ Arief Suadi, Sistem Pengendalian Manajemen, BPII, Yogyakarta, 1995, hlm. 3

⁹ Op.cit

We usually find this term coordination in activities involving many people in it, or working collectively in groups, because an organization requires it good coordination in carrying out their duties effectively professional.

To be able to have good coordination, it is necessary to have a group requires a leader who is able to manage his members well. When a group can work effectively and harmonious, then organizational goals can be more easily achieved. In the context of coordination between the Head of Criminal Investigation Unit and Kasat Nabire Police Intelligence and Security has been in place for a long time, if there are cases that require cooperation between internal units reveal it. It's just that this coordination effort has not yet occurred effectively and harmoniously in a work environment cooperation between units.

The results of the author's research show that coordination sometimes conflict with the work of each unit, so there is overlap in the work of members of the Criminal Investigation Unit and Intelligence Unit.

Asked about the coordination function between units, Head of Criminal Investigation Unit state:¹⁰

"The handling of corruption cases has not been completed by the police, especially the Criminal Investigation Unit, will of course produce negative impacts, including societal assumptions against weak law enforcement, and will result in this community apathy towards the law, increasing corrupt practices in regional, sub-district government offices, until it reaches the villages, and can reduce the image Police in the eyes of the public. Therefore, if there is a case Corruption in which the perpetrator or witnesses avoid or escaped, we immediately coordinated with Kasat Intelkam to mobilize its members to help us detect the perpetrator or witnesses, but even if however, we are still having difficulty chasing down the perpetrators and witnesses, because when we coordinate, it is not certain implemented immediately, because there are also many activities on Sat Intelkam requires special attention."

In line with that, the Head of Intelligence and Security stated: "Frequent coordination carried out by us, the Intelligence and Security Unit and the Criminal Investigation Unit, but you know ourselves, we also have main duties and functions that we carry out regularly, so it works the same thing between us is often put second, the result is quite long only then can detect and reveal cases that coordinated with us, or vice versa."¹¹

According to the author, the explanation of the two Unit Heads is quite objective, considering that there are still many members of Criminal Investigation and Intelligence who do not understand how tasks require coordination and work together well, apart from the main tasks. Everything still waiting for each other. If there is social unrest political, or criminal acts involving many people, for example riots riots, riots, beatings or persecution, then everything moves together, because it's easy to find out who's driving it or who was the provocateur. But if it is against crime Ordinary general crimes or certain crimes require a certain amount of time took a long time in uncovering the criminal act, which finally resulting in a decline in the level of public trust in performance of police officers at Nabire Police.

This condition cannot be separated from the lack of understanding of the coordination function and cooperation between units by members of the Criminal Investigation Unit and Sat Intelkam working at the Nabire Police. Apart from that, the form of criminal act that occurred is still considered specifically below control of each unit. In another section, Head of Criminal Investigation Unit Nabire Police AKP. Bertu Harydika Eka Anwar, STK., SIK, stated: "There are our members who don't understand the function coordination and cooperation between units, making work difficult the same between us if there

¹⁰ Op.cit

¹¹ Op.cit

is a criminal case that requires it special attention from all existing units". As well as Nabire Police Intelligence and Security member Brigadier Aris Sunoto who said: "We both served in plain clothes (usual), making it difficult for command in the field, because between Some of us don't know each other well."¹²

In the author's view, law enforcement cannot carried out haphazardly by the Criminal Investigation Unit and the Intelligence and Security Unit at the Nabire Police Station. These two units are the spearhead of enforcement law in society in Nabire Regency which is Nabire Police jurisdiction, therefore in implementing Their duties must uphold solidarity and discipline good in receiving reports, investigating, investigating and processing criminal offenses to court, especially criminal offenses involving and detrimental to society and the state, for example political crimes, criminal acts of corruption, criminal acts of illegal logging, criminal acts persecution, and certain criminal acts, as regulated in applicable legislation. What's more, you need to pay attention by each unit, that there are tasks between these units very similar, namely investigation, as the task of the Unit Criminal Investigation, and the duties of the Intelligence Unit, namely Investigation, security and mobilization for the purposes of carrying out duties and police functions, especially law enforcement, coaching security and public order, as well as the need for defense and strength assistance tasks social, all of which can run well if they function monitoring, supervision, control and coordination, can done well and carefully.

Conclusion and Suggestions

Collaborative relationship between the Criminal Investigation Unit and the Unit Security Intelligence in dealing with Crime at the Police Nabire has not been effective and has not been created in a harmonious, unified, and discipline, because of the monitoring, supervision, control and coordination are still weak regarding its performance, so that criminal acts are still reported by the public takes a long time to reveal, especially cooperation in monitoring and finding perpetrators and present witnesses who have disappeared from the location criminal crimes, because each unit has also internal tasks that are being handled, except follow-up crimes involving many people, for example The Crime of Attacking and the Crime of Persecution easy to monitor the identity of the perpetrator and witnesses.

There is a need for training for members of the Investigation Unit Nabire Police Crime and Intelligence Unit carried out by The Head of Police, the Head of the respective Unit, is concerned good monitoring, supervision, control and coordination between units, so that the cooperative relationship between the two units can be effective in overcoming and uncovering Crimes in Nabire Regency where the perpetrator or witnesses have fled from their respective residence to avoid the applicable legal process, as well as the need for it socialization of ways to deal with crime in the environment community for religious leaders, traditional leaders and figures community, so that it can be passed on to the community each.

References

- Adami Chazawi. (2007) Pelajaran Hukum Pidana 1. Jakarta: PT. Raja Grafindo.
- Arief Suadi. (1995). Sistem Pengendalian Manajemen, Yogyakarta: BPII.
- Bunga M Maroa, M.D. Arief, Djanggih, H. (2019). Urgensi Peran Serta Masyarakat Dalam Upaya Pencegahan Dan Pemberantasan Tindak Pidana Korupsi. *Law Reform*, 15 (1), 85-97
- Interview with Haji Hafid, Nabire Community Figure, September 5 (2023, 10.00 WIT.

¹² Interview with Nabire Police Member Brigadier Aris Sunoto, on August 29 2023, 11.12 WIT

Interview with Head of Criminal Investigation Unit at Nabire Police, AKP. Bertu Harydika Eka Anwar, STK., SIK, on August 28 (2023), 13.00 WIT

Interview with Head of Criminal Investigation Unit at Nabire Police, AKP. Bertu Harydika Eka Anwar, STK., SIK, on August 28 (2023), 13.00 WIT

Interview with Nabire Police Member Brigadier Aris Sunoto, on August 29 (2023), 11.12 WIT

Ismail, C. (2012). Tantangan Polri dalam Pemeliharaan Kamtibmas Pada Masyarakat Demokrasi. Jurnal Srigunting Jakarta.

Ismu Gunadi dan Jonaedi Efendi. (2014). Hukum Pidana. Jakarta: Kencana.

Moleong, L. J. (2007). Metodologi Penelitian Kualitatif. Bandung: Remaja Rosdakarya.

Copyrights

Copyright for this article is retained by the author(s), with first publication rights granted to the journal.

This is an open-access article distributed under the terms and conditions of the Creative Commons Attribution license (<http://creativecommons.org/licenses/by/4.0/>).